

0021

**Penta**

sauna tent



**ALPINE SAUNA**

SAUNA EVERYWHERE



**Dear Customer,** congratulations on your purchase of your sauna tent. Please read the following instructions carefully and follow them to prevent potential damage. We accept no liability for damage resulting from failure to follow these instructions or from improper use.

---

## TABLE OF CONTENTS

---

Safety instructions 4  
Scope of delivery 5  
Tent setup 6  
Sauna operation 9  
Tent dismantling 10  
Important Notes 11

---

## TECHNICAL DATA

---

Article number	0021
Dimensions (assembled)	185 x 185 x 190 cm
Dimensions (folded)	140 x 30 x 30 cm
Weight	22 kg

---

## SAFETY INSTRUCTIONS

---

- **Always leave the lower ventilation flap in the tent wall open during sauna operation!**
- Do not operate the sauna unattended.
- Use only suitable and dry firewood.
- Do not place any flammable materials near the oven.
- Do not make any technical modifications to the tent. This can lead to hazards during use and will void the manufacturer's warranty.
- In case of snowfall, support the roof from the inside against the roof load using a suitable ceiling support.
- When not in use, attach window covers to the outside.
- Take down the sauna tent if there are strong winds.
- Secure the sauna tent adequately against wind using the supplied pegs and guy ropes, or weigh down the outer hem of the tent sufficiently with weights.
- Always place the sauna heater on the supplied heat protection mat to prevent damage to the floor.
- Use only suitable infusion agents.
- Children are only allowed in the sauna when accompanied by an adult.

---

## OVERVIEW

---



Erected sauna tent

SCOPE OF DELIVERY



1	Tent	6	Heat protection mat (oven)
2	Tent bag	7	Clip-on floor
3	Rain cover	8	Instructions
4	Tent pegs & guy lines		
5	Tent poles		



## TENT SETUP

- (1) Place the tent bag on a sufficiently large and level surface.
- (2) Unfold the tent so that the tent roof side faces upwards.
- (3) Grasp a tab in the center of any side panel and pull firmly until the side panel opens.
- (4) The first side of the tent wall is now erected.
- (5) Repeat the process for each side wall.
- (6) Go into the tent and push the roof frame outwards from the inside with a strong push.



## TENT SETUP

(7) The basic setup of the tent is now complete.

(8-10) Now insert the first (of two) tent pole – supplied separately – first into the lower and then into the upper loop at the entrance. Close the Velcro fastener.

(11) Repeat (8), (9) and (10) for the second tent pole.

(12) Secure the sauna tent using the provided pegs. If pegs cannot be used, weigh down the outer hem of the tent with sufficient weights (stone slabs or similar).

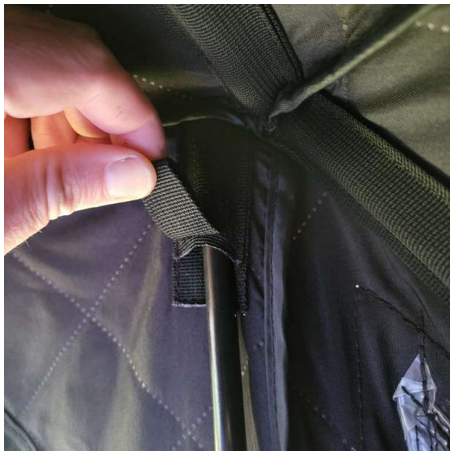
7



8



9



10



11



12





## TENT SETUP

(13) Attach the guy ropes to the metal rings in the center of each tent wall and tighten the ropes.

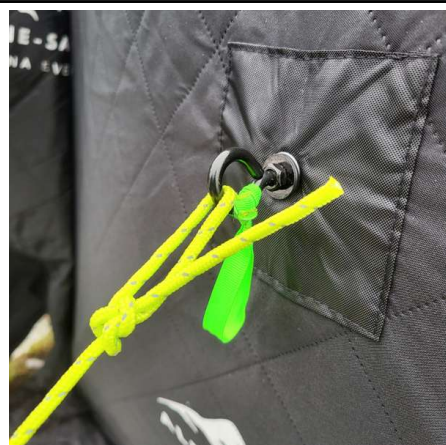
(14) Pull the enclosed rain cover over the tent roof.

(15) Attach the rain cover to each tent wall as shown.

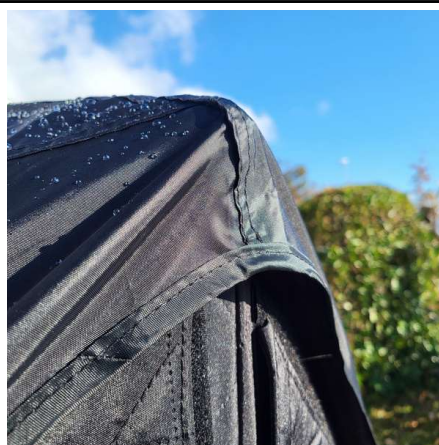
(16) Sauna use is also possible with the rain cover attached. Removing the cover is not necessary.

(17) Optional: If you cannot use tent pegs, weigh down the tent edges with sufficient weights.

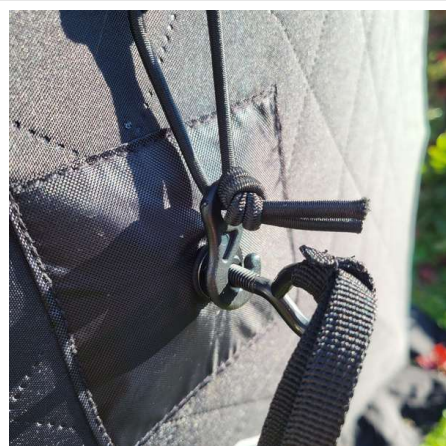
13



14



15



16



17





## SAUNA OPERATION

- (1) Always leave the lower, elongated ventilation flap open during sauna operation! It supplies the heater and the users with fresh air.
- (2) Remove the chimney hole cover.
- (3) Close the heat vent. It serves to dissipate excess heat when necessary.

1



2



3



## TENT DISMOUNT

- (1) Remove the tent poles at the entrance.
- (2) Remove all tent pegs, guy lines or hem weights.
- (3) Install all window covers and pull the tent roof in from the inside.
- (4) Push in all the tent walls one after the other from the outside.
- (5) The tent is sinking.
- (6) Fold the tent poles over each other and put the dried tent back into the tent bag.



---

## IMPORTANT INSTRUCTIONS

---

**Note :** Always keep the lower ventilation flap open during sauna operation! It supplies the sauna heater and users with the necessary fresh air.

Take down the tent for safety in strong winds.

- Check the condition of the sauna tent before each use.
- Close all window coverings when not in use; this protects the windows from UV radiation and flying debris.
- Install the included rain cover. You can use the sauna with the rain cover attached.
- Avoid strong UV radiation. UV radiation weakens the tent fabric over time. Take down the tent if it will not be used for extended periods, during the summer, or in intense sunlight.
- Do not wash the tent with detergents. Gently scrub stains with water only.
- Pack the tent only with the window covers attached and thoroughly dried to avoid mold and cracks.
- Leave the sauna if you feel unwell.

---

## MANUFACTURER

---

**Manufacturer:**

Alpine Sauna GmbH, Georgsmatt 3b, 6415 Arth, Switzerland

Tel.: +41 44 974 28 05, Email: [info@alpine-sauna.com](mailto:info@alpine-sauna.com)







